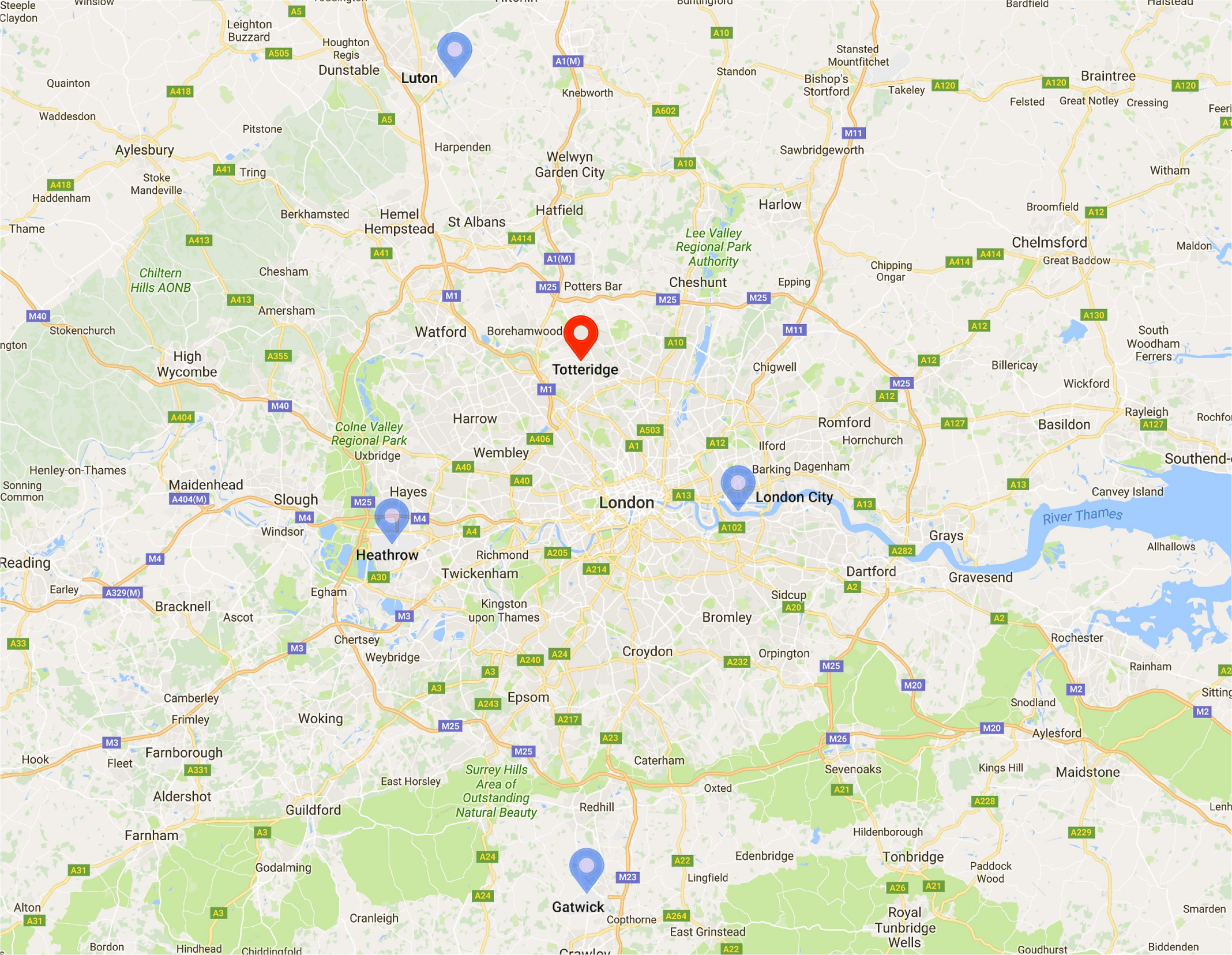


Reculver, Totteridge Common, London





14,000 sq ft residence set in 24 Acres of rolling countryside



A unique contemporary country estate in London



Light and transparent architecture in a secluded private park setting



Sophisticated materials of the highest quality



Stunning modern architecture



State of the art leisure facilities



Generous outdoor spaces with uninterrupted countryside views



Seamlessly flowing indoor and outdoor spaces



Intriguing secluded patio



Open space living amidst the English countryside

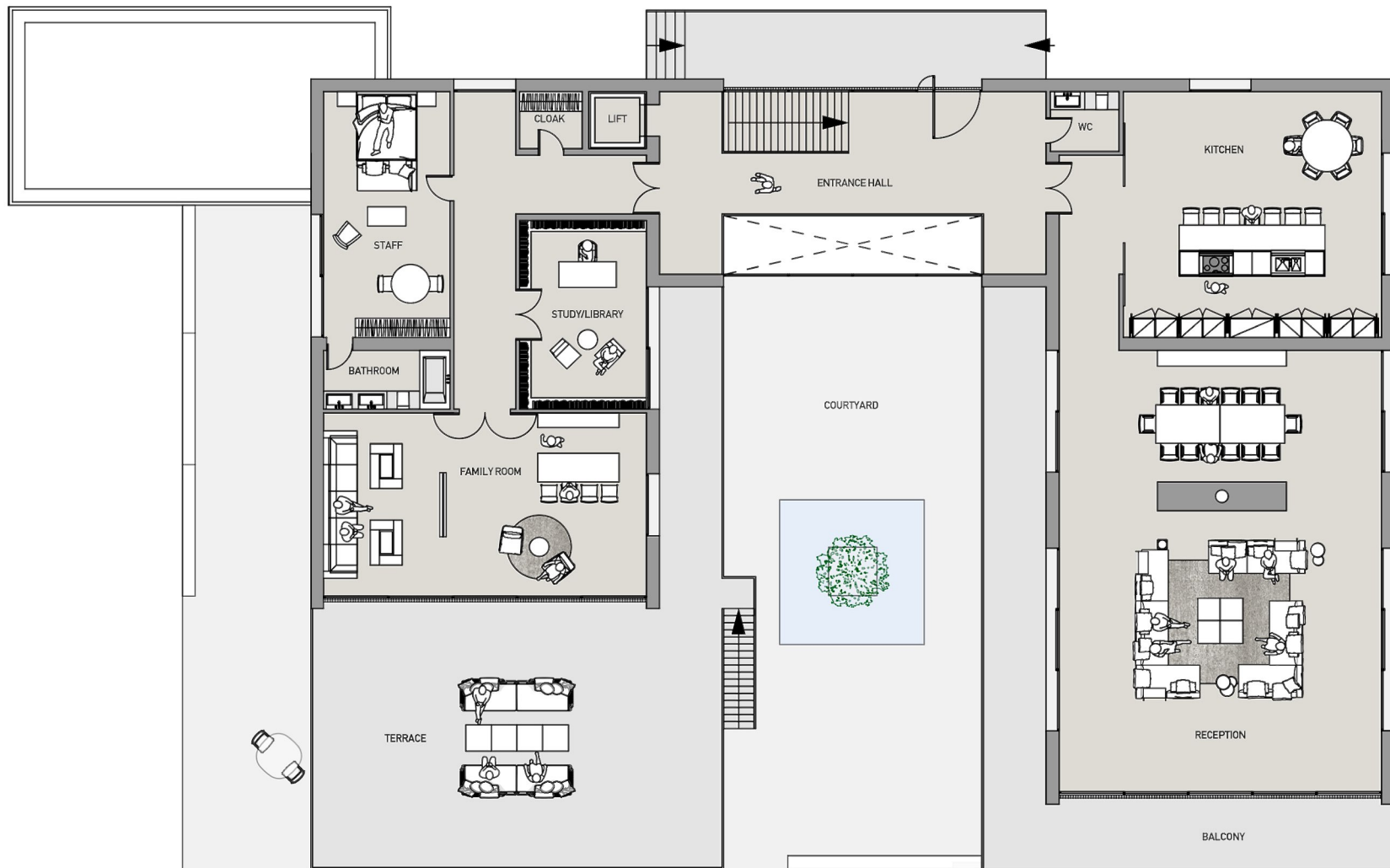


Architecture

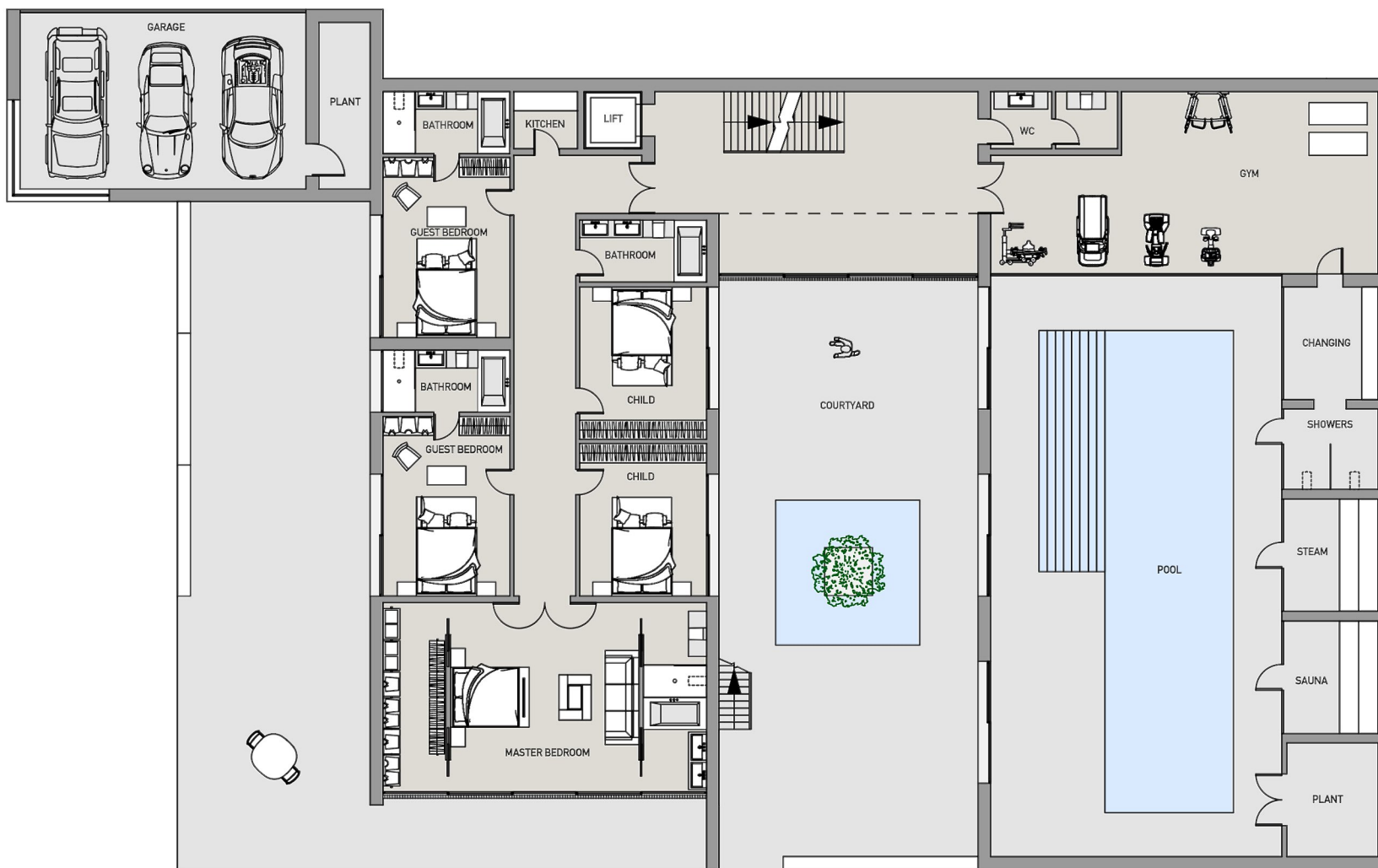
The house was carefully conceived to take advantage of the terrain and unique verdant setting with minimal framed full height windows and open plan layouts affording incredible views of the countryside throughout the property. Luxurious and sympathetic material finishes including natural stone and timber further contribute to the stunning visual appeal of the property.



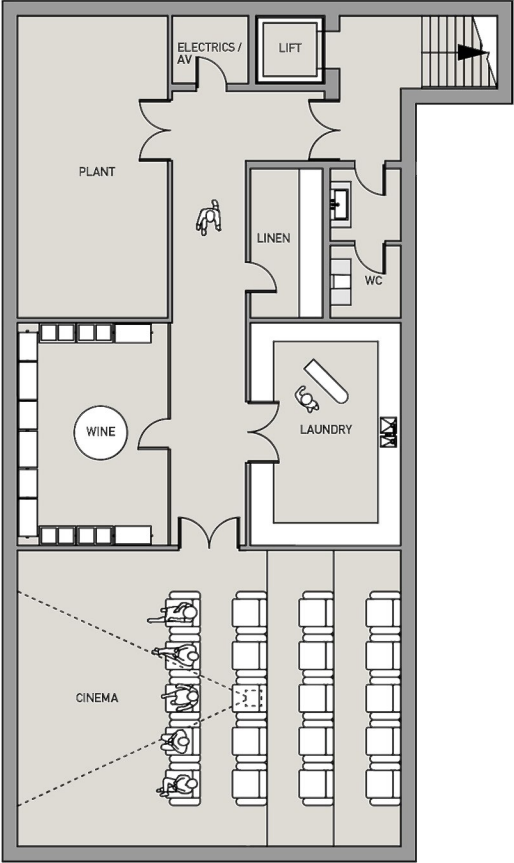
Ground Floor



Lower Ground Floor



Basement



Red Button Development

The design team is lead by Nico Rensch who has an international reputation in architectural design, and 25 years experience working with high end residential and commercial refurbishments, with work featuring in publications worldwide. Through innovative designs and layouts, and by using immaculate materials and finishes, Red Button Development has designed properties of long lasting quality and timeless architectural style in locations such as New York, St Moritz, Zurich, Kiev, Milan, Tel Aviv and London.

